

# Quick Start Guide for OnlineAVL 2.0

## TABLE OF CONTENTS

<b>1.0 INTRODUCTION .....</b>	<b>2</b>
<b>2.0 REQUIREMENTS .....</b>	<b>2</b>
<b>3.0 INSTALATION .....</b>	<b>3</b>
<b>4.0 GETTING STARTED .....</b>	<b>4</b>
4.1 BEFORE STARTING THE APPLICATION.....	4
4.2 START THE ONLINEAVL APPLICATION .....	4
4.3 LOGIN .....	4
4.3 LOGIN .....	5
4.4 CHANGING YOUR PASSWORD .....	5
4.5 DISCONNECTING FROM THE ONLINEAVL SERVER.....	5
4.6 EXITING THE APPLICATION .....	5

# 1.0 INTRODUCTION

Congratulations on your purchase of the Navman Wireless Fleet Management Solution. This Quick Start Guide will help you install and become familiar with your OnlineAVL application.

OnlineAVL (Automatic Vehicle Location) is a PC desktop or laptop application which allows you to view and monitor your vehicles on an interactive map display. OnlineAVL represents a key part of the overall Navman Fleet Management Solution. In order for you to be able to fully utilise OnlineAVL you must first ensure the following:

1. Your vehicle(s) have been setup with the Navman Halo Qube or Dome GPS (Global Positioning System) tracking device. Contact your Navman representative to ensure that this has been completed.
2. You have been setup with a user account for access to the Navman Fleet Management Server. OnlineAVL requires a 'user name' and 'password' for security purposes before you will be permitted to access the Navman Fleet Management Server and view your vehicles. Contact your Navman representative to ensure that this has been done.

**NOTE:** The OnlineAVL licensing model allows you to install as many copies of this application as you require. OnlineAVL is 'user name' and 'password' protected allowing you to control access to your fleet's information.

# 2.0 REQUIREMENTS

## HARDWARE:

- 133 MHz or higher Pentium-compatible CPU
- At least 64 megabytes (MB) of RAM; more memory generally improves responsiveness
- 2GB of available hard disk space or more
- A direct Internet connection at a minimum of 56kbs speed or higher (128kbs recommended)

## SOFTWARE

- Microsoft Windows 98/2000/XP

**NOTE:** OnlineAVL is not supported on a Apple Macintosh computer.

## 3.0 INSTALATION

To install the OnlineAVL application onto your PC (please ensure your PC meets the minimum hardware and software requirements for installation first):

1. Download the OnlineAVL 'setup.exe' file from the website
2. Save the file in a folder where you can easily locate it. It is recommended using the default 'Desktop' location
3. On completion of the download, click on 'OPEN' in the windows box that pops up
4. The OnlineAVL Install screen will then open in a new window. Click 'NEXT' to continue. The 'Select Destination Directory' screen will appear
5. If you want to install the OnlineAVL application in the recommended default location, do not modify the settings displayed. The OnlineAVL application will be installed in the default location 'C:\Program Files\Navman\OnlineAVL20'.
  - a. If you want to install the OnlineAVL application in a specific location, select your destination location by browsing through the drive and folder directories. NOTE: by changing the default install directory the instructions in this Quick Start Guide may become invalid
6. Click 'NEXT'. A 'Select Components' screen will appear. Select the country where your fleet is located. Click 'NEXT' to continue
7. The 'Select Start Menu Folder' screen will appear. Click 'NEXT' to continue
8. Choose the Application Icon and Server location you wish to connect to and click 'NEXT' to continue
9. The 'Ready to Install' screen will appear. Click 'NEXT' to continue
10. Click 'INSTALL'. OnlineAVL will begin installation
11. The installation process should only take a few minutes. At the end of the installation process click 'FINISH'
12. OnlineAVL is now installed and ready

## 4.0 GETTING STARTED

### 4.1 BEFORE STARTING THE APPLICATION

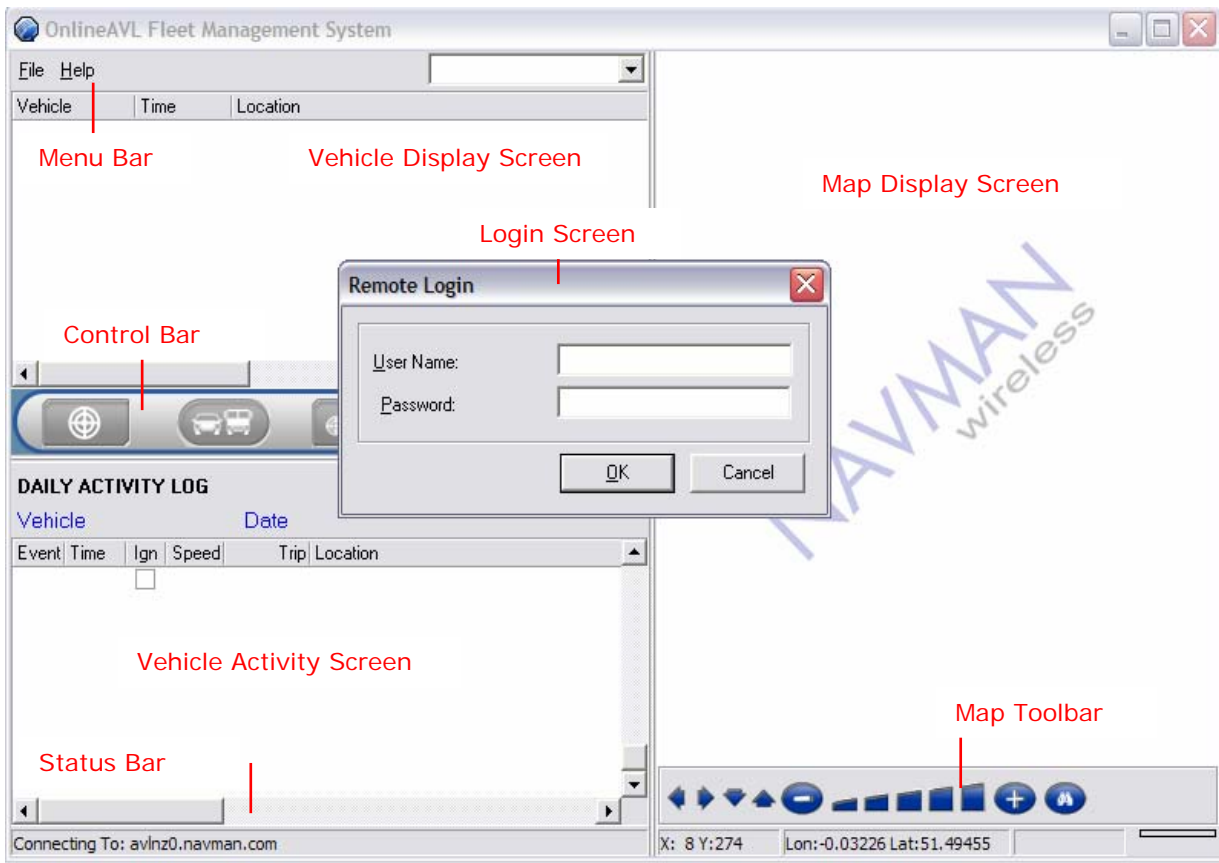
Check that an Internet connection is available:

- If you are using a network connection, the Internet should be available through the network. Check with your system administrator if you are having difficulty connecting to the Internet
- If you are using a dial-up Internet connection, ensure you have connected prior to launching OnlineAVL

### 4.2 START THE ONLINEAVL APPLICATION

To start the OnlineAVL application:

1. Click on the OnlineAVL icon  on the Windows Quick Start bar at the bottom of your desktop or access the application by following the menu items from the Windows 'Start' button: 'Start' > 'Programs' > 'Navman OnlineAVL' > 'OnlineAVL'
2. Once the application is started, the OnlineAVL window will appear with the 'Remote Login' screen open



### 4.3 LOGIN

To login to OnlineAVL:

1. Enter your 'user name' and 'password' (case sensitive) as provided to you by your Navman representative or your OnlineAVL administrator
2. Click 'OK'

### 4.4 CHANGING YOUR PASSWORD

To change your OnlineAVL Login password:


1. Select: 'File' > 'Password' from the OnlineAVL Menu Bar
2. Enter your existing password
3. Enter your new password
4. Confirm your new password entry again
5. Click 'OK'. Your new password will replace the old one

NOTE: both your 'user name' and 'password' are case sensitive.

### 4.5 DISCONNECTING FROM THE ONLINEAVL SERVER

To terminate your OnlineAVL user session, select: 'File' > 'Disconnect' from the OnlineAVL Menu bar.

### 4.6 EXITING THE APPLICATION

To exit the OnlineAVL application, select: 'File' > 'Exit' from the OnlineAVL Menu bar. You can also exit the application by clicking on the Close  icon on the top right corner of your OnlineAVL window.

This document contains confidential and proprietary information that belongs to Navman. Using any of the information contained herein, copying or imaging all or part of this document by any means, or disclosing any of its content to third parties is strictly forbidden without express written consent of NAVMAN. NAVMAN is a registered trademark. All rights reserved. Web Site [www.navman.com](http://www.navman.com)