



# aria 24ip



**Digital & VoIP  
Communication  
Solutions for  
New Zealand  
Enterprises**



# Over 25,000 *aria* Telephone Systems sold in New Zealand.

## *aria* in New Zealand

*aria* phone systems were launched in New Zealand in the mid-1980s by Telecom New Zealand. Telecom New Zealand was looking for a range of systems that could meet the demands of New Zealand business at an affordable price and take advantage of all the network technology that Telecom offered. Working together, LG Electronics and Telecom New Zealand developed the *aria* range of telephone systems.

Since their launch in 1987, over 25,000 *aria* telephone systems have been sold in New Zealand making *aria* by far the largest selling brand of telephone system in New Zealand.

In December 1999, Atlas Gentech took over the distribution for the *aria* telephone systems and has never looked back. The brand continues to grow at a rapid pace with 2005 sales reaching almost 1,000 *aria* telephone systems nationwide.

Recently, LG Electronics formed a joint company with Nortel Networks, called LG-Nortel. Over the past 3 years, the company has developed three completely new ip-enabled *aria* ranges of telephone systems...the *aria 24ip*, the ipLDK range of *aria 50ip*, *130ip 300ip* and *600ip* systems and a pure IP system called *iPECS*.

So today, New Zealand businesses can choose from a range of phone systems that covers the SoHo market, small-medium enterprises, general business market, hospitality and even large corporates and government departments.

## Authorised *aria* Resellers

*aria* is the only brand of communications systems sold in the country with a truly national network of authorised resellers. With over 40 authorised resellers, your company can enjoy a high level of professional service just about anywhere in the country, from Invercargill to Whangarei and most places in between.

Many of the *aria* authorised dealers have been selling *aria* for years. The level of experience between them would be unmatched in the market.

And Atlas Gentech makes sure that these dealers are kept up-to-date on all new products and changes to the systems by way of conferences and on-going product training programmes run on a national basis.

So whether you are a small business or an international one, together Atlas Gentech and its authorised network of *aria* dealers can professionally service your communications needs anywhere in the country.



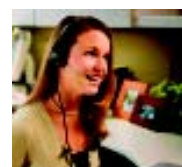
Atlas Gentech has been importing, distributing and servicing telecommunications products in New Zealand since 1972. The company employs over 35 staff and represents over 20 communications product manufacturers from around the world, including LG-Nortel.

Atlas Gentech tests and obtains approvals for all the communications products that it sells. It also services the products from its Auckland Head Office where it has 5 full-time technicians on staff. The company also has 3 highly experienced technical support staff available to assist our authorised resellers with any technical issues that may arise and to solve unique communications problems.

**All *aria* telephone systems come with a Full Year Parts & Labour Warranty from Atlas Gentech.**

The *aria 24ip* is designed and engineered for enterprise companies such as:  
**Professional Offices, Medical Offices, Consultants, Motels, Clubs, Small Schools, Retail Shops, Bars & Restaurants, Small Warehouse Operations, Car Dealerships or any other enterprise business with 20 or less staff.**

**Hospitality Software is also available.**



# *aria 24ip*

# Affordable Communication Solution for Small Businesses.

Today's convergent world of communications has brought about an evolution in business communication systems. LG-Nortel's **aria 24ip** is part of a new class of communication system built to support Voice Over Internet Protocol (VoIP) while continuing to provide all the services, features and the reliability of a traditional business telephone system.

## Powerful and Easy to Use

The powerful **aria 24ip** is built on revolutionary technology that provides features such VoIP, Bluetooth, Networking, WiFi wireless handsets, CTI (computer telephony integration), USB connectivity and more. It is the most powerful system built to date in its class. In fact, it delivers virtually all of the features of the larger **aria** systems.

## Future Friendly Philosophy

As technology evolves, it is reassuring to know that LG-Nortel incorporates a future-friendly philosophy into the design of all **aria** telephone systems. The **aria 24ip** supports 4 generations of digital handsets, dating right back to the first range, released in 1995.

## One Operating Platform

The entire range of **aria** systems is built on a uniform operating platform to provide a range of benefits to your business. With a single operating platform LG-Nortel is able to make the handsets compatible across its entire range from the **aria 24ip** through to the **aria 600ip**. And all these **aria** systems are able to network together to integrate multiple office sites.

## Move to VoIP at Your Own Pace

The **aria 24ip** gives you the option to move to VoIP when the time is right for you. Because it has evolved from traditional PBX technology, it can be installed and operated as a traditional telephone system and at any stage you can progressively integrate VoIP into your business. The advantages of integrating VoIP in stages means you don't have to outlay large resources to upgrade your entire data network to enjoy benefits such as toll savings between networked office sites and IP extensions into remote sites or home offices.

## Powerful Call Handling Capabilities

Customer service is paramount in today's competitive business environment, so the **aria 24ip** comes standard with powerful ACD (Automatic Call Distribution) software, which automates call handling.

## Auto Attendant

In busy situations where calls are placed into queues by the system, an affordable Auto Attendant module presents a professional image for your business by playing an announcement to calls that are not answered by the receptionist. The system can then offer the caller options such as single digit transferring to the service or department they require.

## Integrated Voice Messaging

And where your staff need a voice mail service, the **aria 24ip** has an affordable voice messaging option which offers Auto Attendant functionality and all of the practical features of a voice mail system without the expensive price tag.

## Customised Programming Access (CPA)

**aria 24ip** CPA Software gives you the ability to manage your own phone system. In conjunction with your LG-NORTEL authorised **aria** dealer, you can determine the level of access to grant to administration staff so they can make changes such as adjusting to daylight savings time, programming flexible buttons on any handset or even moving extensions to different hunt groups from their PC.

## Remote Solutions – IP Handset, RSG, SoftPhone

The **aria 24ip** supports an IP telephone or digital telephone (via a Remote Service Gateway) located at your home office or remote office. The remote telephone acts as a fully functional extension that can make and receive calls through the office phone system with the display and LED's functioning exactly as if you were on your office telephone.

Ideal for the business traveller, the **aria 24ip** also supports a soft IP Phone, which is installed on your laptop. This gives you the freedom to access and be part of your business phone system from anywhere in the world, through a broadband service or wireless hotspot.

Notes: VoIP services including Networking IP handsets, RSG and Soft Phone and WiFi Handsets will be available in Q3 2006.

## Maintenance

The **aria 24ip** offers the flexibility to help reduce the cost of managing your communications system. Programming changes can be done remotely by accessing the system via modem or the internet. Changes to the system can be implemented quickly and without the expense of a site visit.

## System Capacities

Maximum Digital Extensions	20
Maximum Analogue Extensions	23
Maximum Hybrid Extensions	3
Total Extensions per System	24
Basic Rate (BRI) ISDN	4 Channels
PSTN Analogue Lines	8 Lines
Total ISDN Channels & PSTN Lines per System	8
Maximum VoIP Channels per System	8 Channels
Internal/External Paging	5/1
Alarm Input	1
External Control Contacts	2
Voice Mail Interface Board/Auto Attendant Ports	3/3
Telephone Station/System Speed Dials	100/500
Maximum WiFi Wireless Handsets per System	8

Note: Not all Maximum Capacities can be achieved simultaneously and are dependent on available system time slots and mounting slots. Specifications are subject to change without notice.

# A feature rich and attractive range of digital telephones.



LDP7004D



LDP7008D



LDP7016D



LDP7024D



LDP7024LD

## aria's LDP7000 series Features

For use with the 24ip and LDK Digital Telephone System ranges, LG-Nortel has developed the new LDP7000 series range in two colours - *Limestone and Charcoal*.

There are five models in the range:

- LDP7004D - 4-button Display Monitor Telephone.
- LDP7008D - 8-button Display Speakerphone.
- LDP7016D - 16-button Display Speakerphone.
- LDP7024D - 24-button Display Speakerphone.
- LDP7024LD - 24-button Large Display Speakerphone.

Each model is attractively styled with easy to read and simple to use telephone features such as a **Navigation Key** for quick access to phonebook and menu, a **Call Back** feature that helps reduce inter-office telephone tagging, and **Active Keys** for fast access to phone features. All the telephones are wall mountable.

The LCD displays on the LDP7016D, LDP7024D and LDP7024LD are all adjustable and are available with an optional pedestal to adjust the phone's viewing angle.

The LDP7016D, LDP7024D and LDP7024LD models can accommodate the optional feature modules:

- ◆ Full Duplex Speakerphone Module
- ◆ Melody Module
- ◆ Full Duplex Speakerphone & Melody Module

The LDP7024D and LDP7024LD models can also accommodate the optional feature modules:

- ◆ Bluetooth Module
- ◆ USB Module

## aria's LDP7000 series Features

### LDP7004D

- Single-Line LCD Display
- On-Hook Dialling
- 2 Programmable Keys
- 5 Fixed Keys

### LDP7008D

- 2-Line LCD Display
- Full Hands-Free Speakerphone
- 8 Programmable Keys
- 5 Feature Keys
- 2.5mm Headset Jack

### LDP7016D

- 3-Line 24-Character LCD Adjustable Display
- Full Hands-Free Speakerphone
- 16 Programmable Keys
- 11 Feature Keys
- 3 Active Feature Keys
- Navigation Key
- Multi-Colour Line Keys
- 2.5mm Headset Jack
- Optional Pedestal
- Optional Full Duplex Speakerphone Module
- Optional Melody Module
- Optional Full Duplex & Melody Module

### LDP7048DSS

- 48 Programmable Keys can be assigned to Direct Station Console, Speed Dial numbers and/or Line-Status
- Can be programmed as feature keys
- Multi-colour line Keys
- Each Keystation supports up to 7 consoles
- Optional Pedestal



# The LDP7000 Series - available in Limestone or Charcoal.



**LDP7004D-BK**



**LDP7008D-BK**



**LDP7016D-BK**



**LDP7024D-BK**



**LDP7024LD-BK & LDP7048DSS**

## aria's LDP7000 series Features

### LDP7024D

- 3-Line 24-Character Adjustable LCD Display
- Full Hands-Free Speakerphone
- 24 Programmable Keys
- 11 Feature Keys
- 3 Active Feature Keys
- Navigation Key
- 2.5mm Headset Jack
- Optional Pedestal
- Optional Bluetooth Module
- Optional USB Module
- Optional Full Duplex Speakerphone Module
- Optional Melody Module
- Optional Full Duplex & Melody Module

### LDP7024LD

- 3-Line 24-Character Adjustable Large LCD Display
- Full Hands-Free Speakerphone
- 24 Programmable Keys
- 11 Feature Keys
- 3 Active Feature Keys
- Navigation Key with eZ Menu
- 2.5mm Headset Jack
- Optional Pedestal
- Optional Bluetooth Module
- Optional USB Module
- Optional Full Duplex Speakerphone Module
- Optional Melody Module
- Optional Full Duplex & Melody Module

### KD-DPB DoorPhone

May be used as a door phone or an intercom and connected to ring on selected extensions.



## aria's WIT-300HE WiFi Cordless

LG-Nortel's new WIT-300HE Wireless IP phone utilises the IEEE 802.11b WiFi wireless standard with full telephony featured proprietary protocol. Within existing wireless environments, the user can save on MAC (moves, adds and changes) costs by utilising the single infrastructure for both voice and data. Because of its user friendly menu interface and plug & play installation, users can be up and running in no time.



### WIT-300HE

- Backlit Colour Graphic LCD Display (128 x 128 pixels)
- Vibration Alert for incoming calls
- 64 polyphonic sounds, more than 50 ring melodies
- Various Phone Book and Directory Functions
- Mobile Phone Styled Friendly User Interface
- Standby Time: 50 Hours Talk Time: 4 Hours
- Battery Type: 1100mAh Battery Pack
- Protocol: LG-NORTEL proprietary protocol (iPECS)
- Wireless Specification: 2.4GHz and 802.11b
- Dimensions (H x W x D): 120mm x 45mm x 25mm
- Includes Desktop Battery Charger



## Corded Telephones for Analogue Extensions



## Cordless Telephones for Analogue Extensions



## Specialty Products

## Audio Conferencing Systems for Analogue, ISDN or VoIP Extensions



## Plantronics Communications Headsets



Imported, Distributed & Serviced By:

**ATLAS GENTECH**

Atlas Gentech (NZ) Limited  
Private Bag 14927, Panmure

Service Telephone: (09) 574-2727 Fax: (09) 574-2722

Consumer Helpline (Toll Call): 0900-500-25

Website: [www.lgaria.co.nz](http://www.lgaria.co.nz)

Authorised *aria* Dealer